



Spare parts for:

## Food processing equipment



Suitable for:

# GIGA



This catalogue is automatically generated.  
Therefore, the sequence of the items might  
not be always shown at best.

Updates will be issued in case of additions  
and/or amendments.

*Suitable **universal spare parts** may not be included*





Suitable for:

# GIGA



Suitable for:

## Abrasive discs for potato peeler

### 9720625 ABRASIVE DISC FOR POTATO PEELER $\varnothing$ 350 mm

fixing hole  $\varnothing$  28x15 mm - OLD MODEL  
 for Potato peeler (EMMEPI) PEL15  
 for Potato peeler (FAMA) LT15  
 for Potato peeler (FIMAR) PL16  
 for Potato peeler (ROGA) PL15 - PL400  
 for Potato peeler (SIRMAN) PP15EXPOCE  
 for Potato peeler (ZANUSSI) PP15

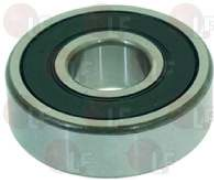


GIGA PL400

## Bearings

### 1063005 BEARING 6201 2RS

external  $\varnothing$  32 mm-internal  $\varnothing$  12 mm-thickness 10 mm  
 for Potato peeler (DITO ELECTROLUX) T5S  
 for Potato peeler (ZANUSSI) T5S



GIGA SDTR0050

### 1063906 BEARING 6203 2Z

external  $\varnothing$  40 mm-internal  $\varnothing$  17 mm-thickness 12 mm  
 for Grater (FAMA) - Series 12CE  
 for Grater (FIMAR) GR12S  
 for Grater (SIRMAN)  
 till 1/01/03  
 GF  
 for Kneader (BAKERMIX) MIX203.B  
 for Kneader (OEM) - Series FX - F101 - Series RVE  
 for Meat mincer (FAMA)  
 for Meat mincer (FIMAR) 12C - 12TS - 22C - 22TE  
 for Meat mincer (SIRMAN)



GIGA D314003

## Capacitors

### 3068014 CAPACITOR $\mu$ F 8 450V 50/60Hz

operating temperature  $-25+85^{\circ}\text{C}$   
 in compliance with EEC 93/68 and 92/31 regulations  
 for Slicer (ALA) F300E - 8300 - 9300  
 for Slicer (BRAHER) ELEKG250 - ELEKG275 - ELEKK220  
 USA250 - USA280 - USA300 - USA320  
 for Slicer (RGV) DOLLY250 - DOLLY250S



GIGA D206001



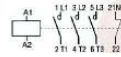
## Contactors

**3351209 CONTACTOR AEG LS05 9A 230V 4Kw**  
 coil 230V 50/60Hz  
 3 normally open contacts  
 1 normally closed auxiliary contact



GIGA D229019

**3351217 CONTACTOR AEG LS7K 18A 230V 7.5Kw**  
 coil 230V 50/60Hz  
 3 normally open contacts  
 1 normally closed auxiliary contact



GIGA Y11100

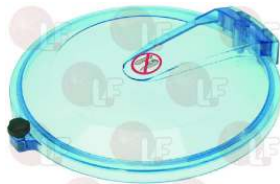
**3351218 CONTACTOR AEG LS7K 18A 230V 7.5Kw**  
 coil 230V 50/60Hz  
 3 normally open contacts  
 1 normally open auxiliary contact



GIGA X55300

## Lids for potato peeler

**9720027 COVER FOR POTATO PEELER  $\varnothing$  310 mm**  
 complete with knob and magnet  
 for Potato peeler (FIMAR) PL16 - PL4 - PL8  
 for Potato peeler (ROGA) PL100 - PL4  
 for Potato peeler (SIRMAN) PP15EXPOCE - PP4EXPOCE  
 PP8EXPOCE



GIGA W006350067



Suitable for:

# GIGA



Suitable for:

## Microswitches

### 9014015 MAGNETIC MICROSWITCH $\varnothing$ 10x26 mm

0.5A 250V - NO contact  
 with cable length 750 mm  
 for Cutter (ANGELO PO) Q3 - Q3M - Q5 - Q5M - Q52  
 Q8 - Q82  
 for Cutter (FIMAR) CL3 - CL5 - CL8  
 for Meat mincer (FIMAR) TR32RSQ0 - TR32TNQ0  
 for Mussel cleaner (FIMAR) LCF10 - LCF18M - LCF5  
 LCN10 - LCN18M - LCN5  
 for Potato peeler (ANGELO PO) P10 - P10M - P102P  
 P20 - P202 - P5  
 for Potato peeler (FIMAR) PPF10 - PPF18M - PPF25  
 PPF5 - PPN10 - PPN18M - PPN25 - PPN5  
 for Vegetables/mozzarella cutter (ANGELO PO) TV1  
 TV1M - TV2L  
 for Vegetables/mozzarella cutter (FIMAR) FNT



GIGA SDTR0309

### 3240148 MICROSWITCH MAGNET 63x19x11 mm



GIGA SD903651

GIGA SD908706

### 3240189 MICRO SWITCH M1DX20 10A 250V

for Kneader (FAMA) KG5 - KG8  
 for Kneader (IGF) 2200/S12 - 2200/S16 - 2200/S25  
 2200/S38 - 2200/S42 - 2200/S70 - 2400/S12  
 2400/S16 - 2400/S25 - 2400/S38



GIGA R31600

### 3240148 MICROSWITCH MAGNET 63x19x11 mm



GIGA SD903651

GIGA SD908706

## Terminal blocks

### 3247017 12-POLE PLASTIC TERMINAL BLOCK

for cable max 6 mm<sup>2</sup>  
 operating temperature 150°C  
 nominal voltage 450V



GIGA X41400